

Mino-Washi Art Museum ~warapped with light or transparent to light~

透く刻、纏う時。

What is WASHI?

WASHI means Japanese paper, one of traditional Japanese crafts.
For a long time WASHI have been used as wooden fittings in Japanese architecture especially for houses.



Problem of the site

Mino city is famous for Mino-WASHI, which is one of traditional WASHI.
Especially this site is the center of Mino-WASHI.
There are already a museum, which shows how to make WASHI etc,
and a studio for young craftsmen, who don't have enough money to have own studio.
But each organization have no relation as landscape or program.



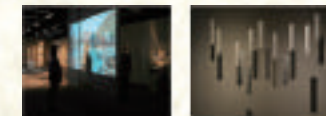
Lightning concept

I think light is one of important elements in architecture,
still it is not object but it show the materials of architecture better if it is designed.



Artist in Residence

Mino city has managed artist in residence from 1998 for 17 years.
They selects 4 artists from all over the world every year, and artists make some works with WASHI for the city.
However there is no place to exhibit these works.
So I decided to propose planning a new WASHI museum exhibiting these contemporary art works with WASHI.



Characters of WASHI

Transmission

Diffusion

Reflection

Projection

Schield



To create new relations

Through this new museum, I will make new relations among Mino city.

1. Craftsmen and Visitors



2. Machine and Handmade



3. WASHI and Art



4. Urban area and Center of WASHI



examples of art works

characters of WASHI

The transmitting Light 透過する光



drawings



Transmission



Diffusion

The soft Light 柔らかな光



lighting works



Reflection



Diffusion

The reflecting Light 反射する光



product design statues

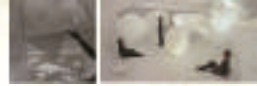


Reflection



Projection

The Light,making shadow 影を落とす光



type of hanging works installation



Projection

The shielding Light 遮る光

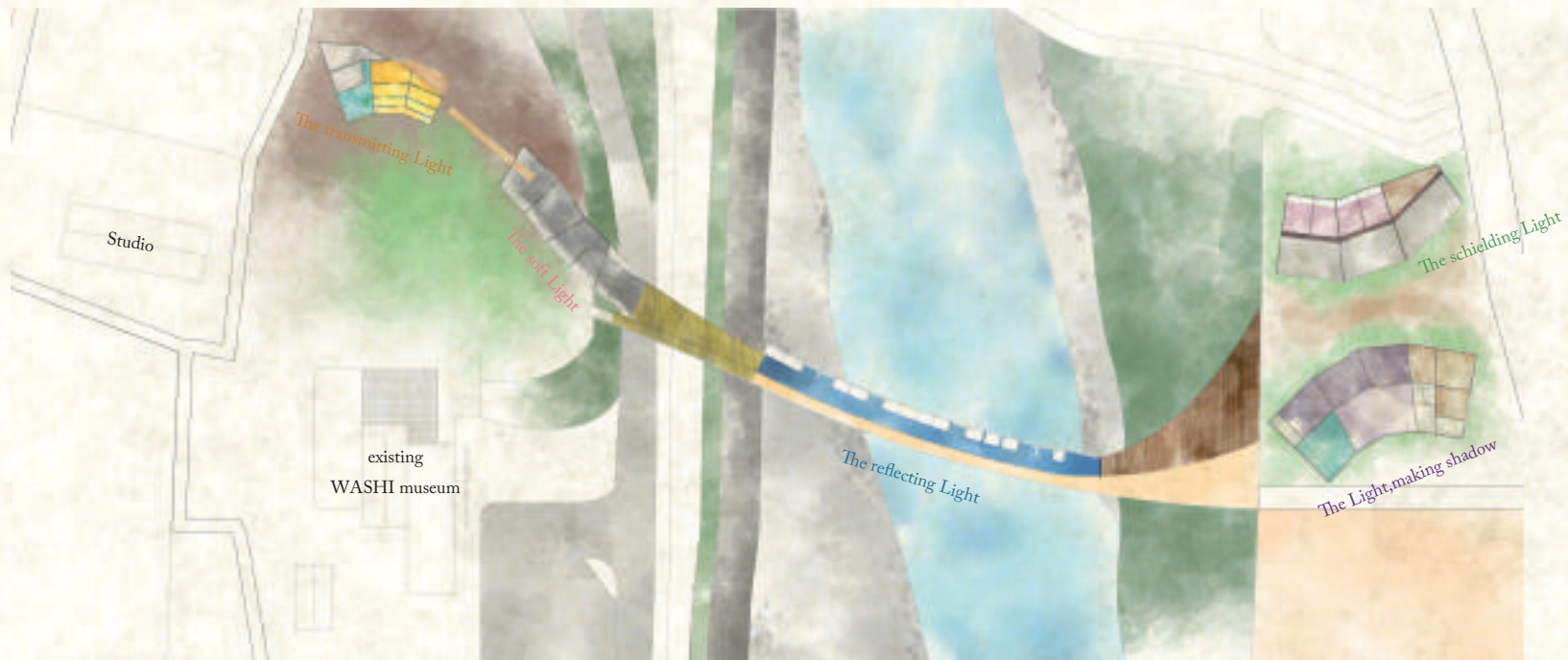


scenes of artists at work



Shield

Plot Planning

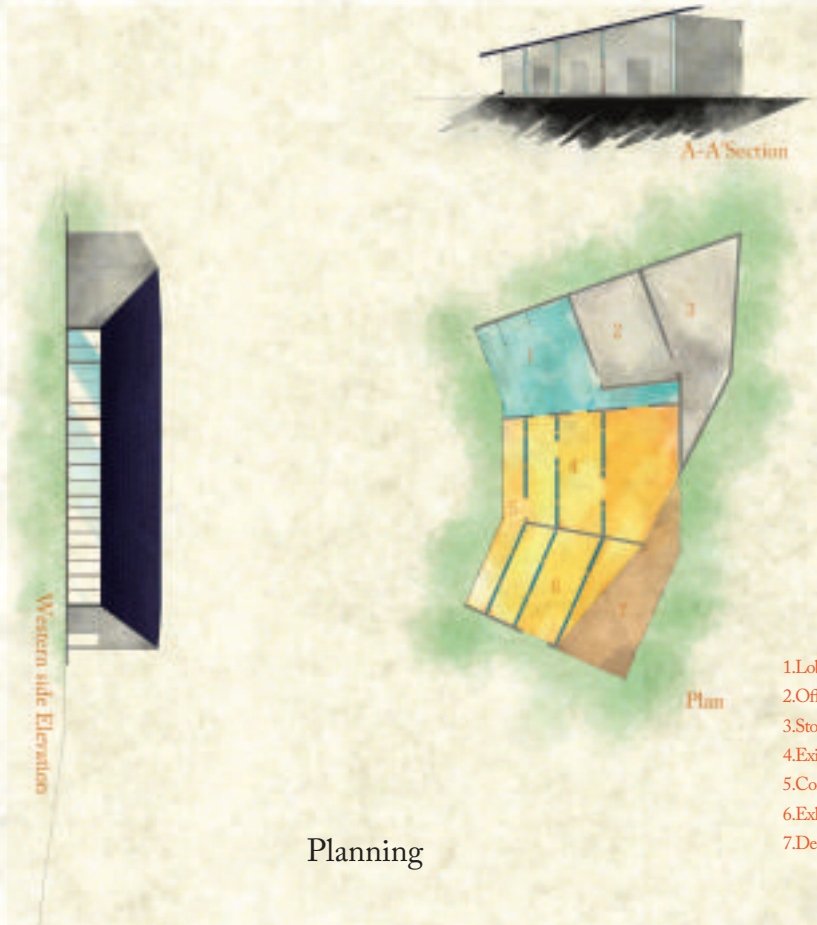


The transmitting Light

透過する光



how to introduce WASHI and Light

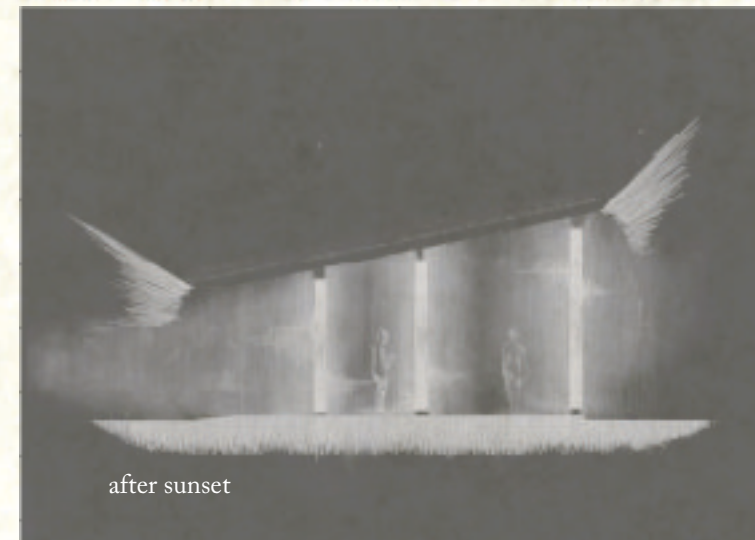


Planning

- 1.Lobby
- 2.Office
- 3.Stock
- 4.Exhibition1
- 5.Corridor
- 6.Exhibition2
- 7.Deck



in the day time

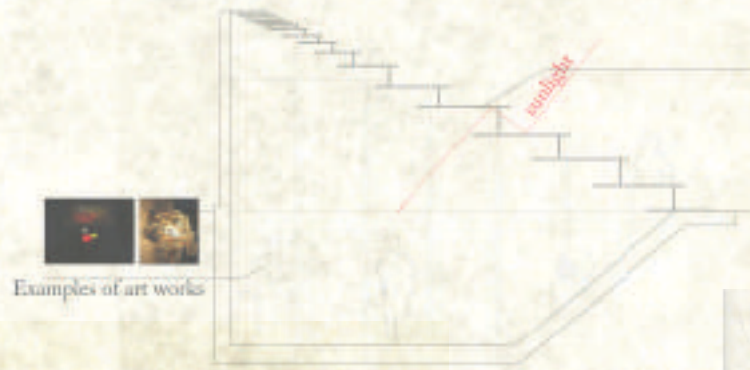


after sunset

Lighting Concept

The soft Light

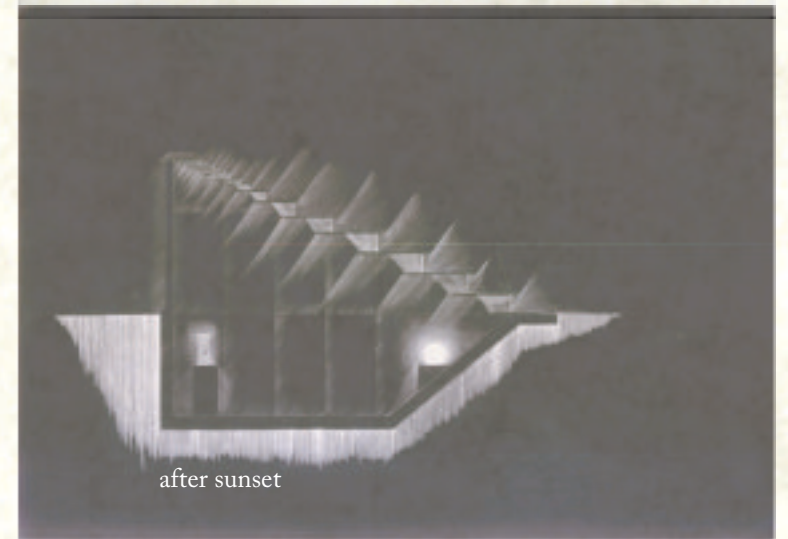
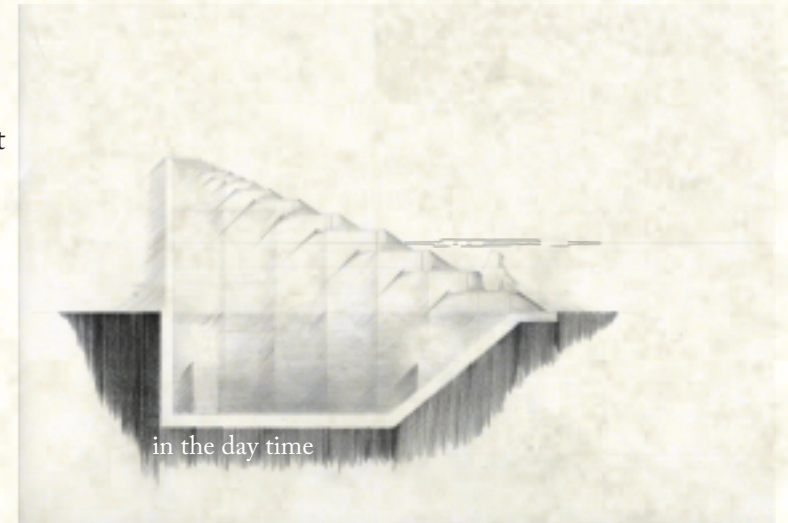
柔らかな光



how to introduce WASHI and Light



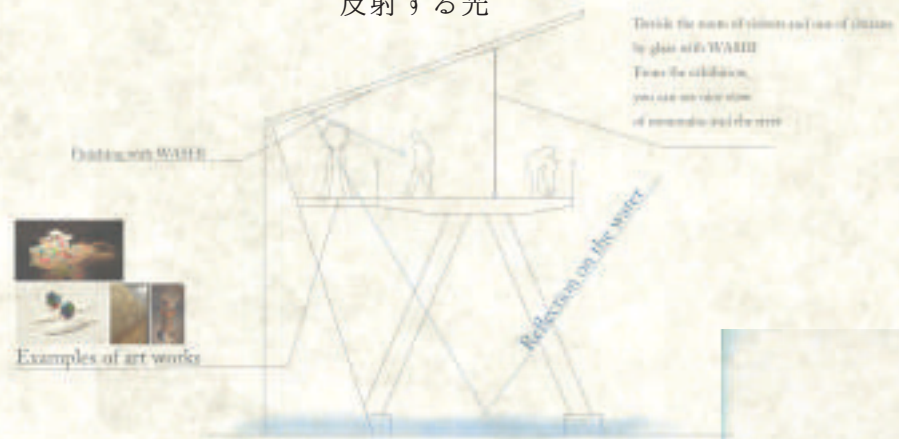
Planning



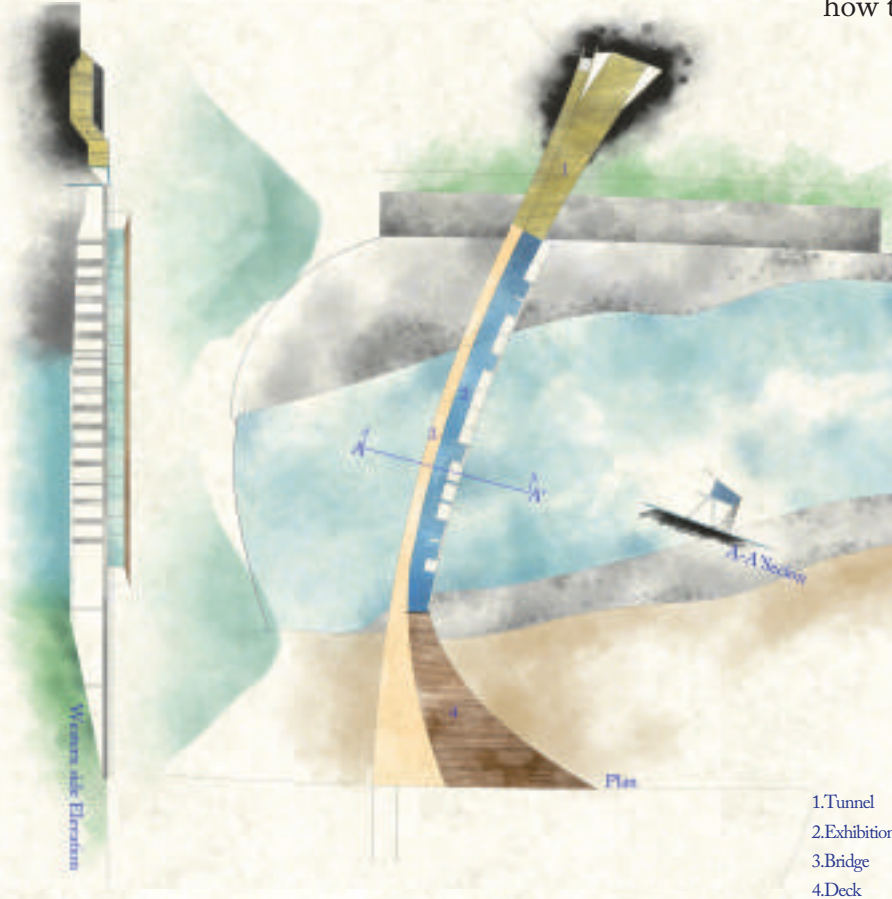
Lighting Concept

The reflecting Light

反射する光



how to introduce WASHI and Light



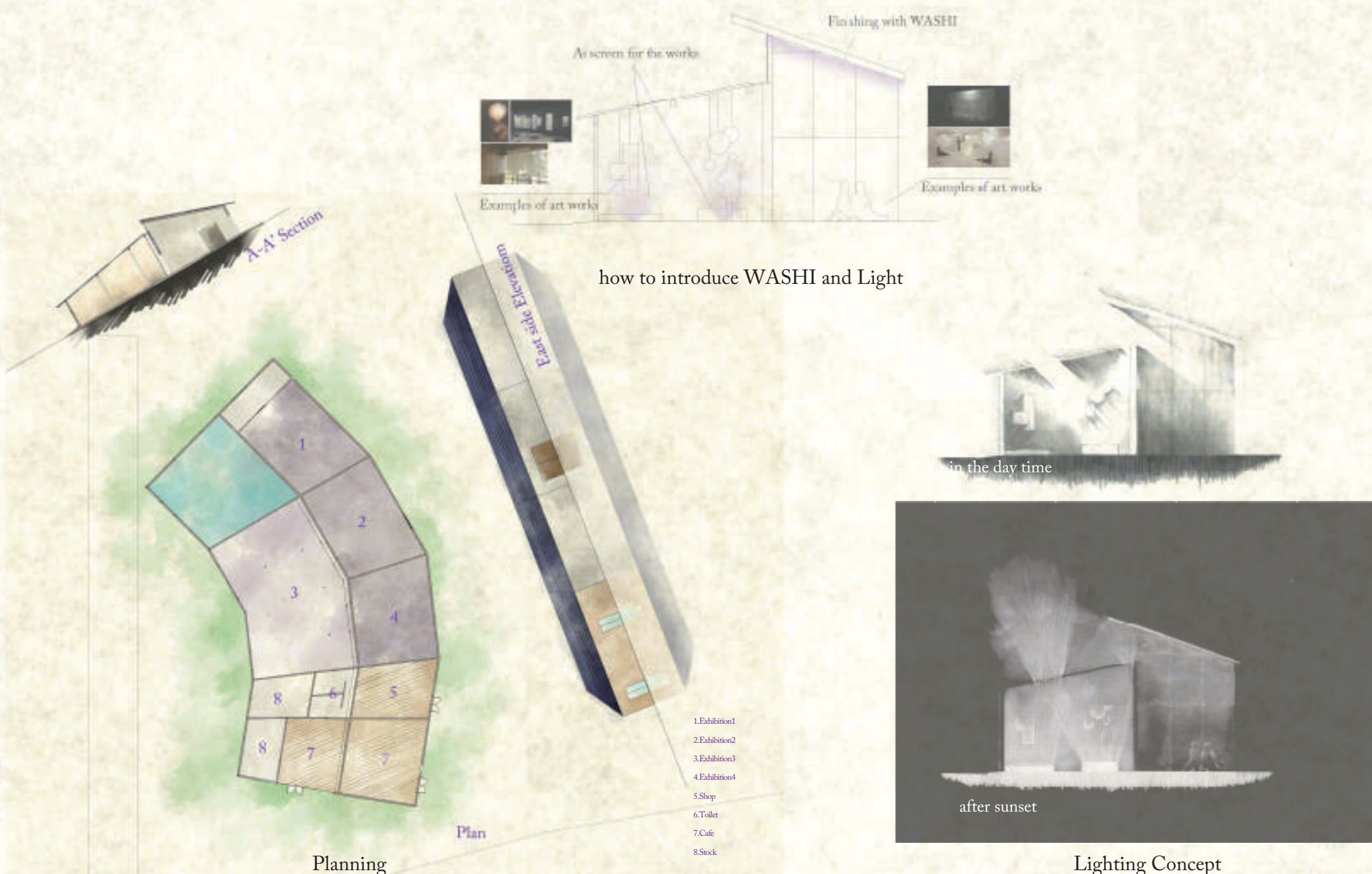
- 1.Tunnel
- 2.Exhibition
- 3.Bridge
- 4.Deck

Planning

Lighting Concept

The Light, making shadow

影をつくる光



how to introduce WASHI and Light

in the day time

after sunset

Planning

Lighting Concept

- 1.Exhibition1
- 2.Exhibition2
- 3.Exhibition3
- 4.Exhibition4
- 5.Shop
- 6.Toilet
- 7.Cafe
- 8.Stock

The shielding Light

遮る光



Open Studio



open or close
as artists like

how to introduce WASHI and Light



A-A Section

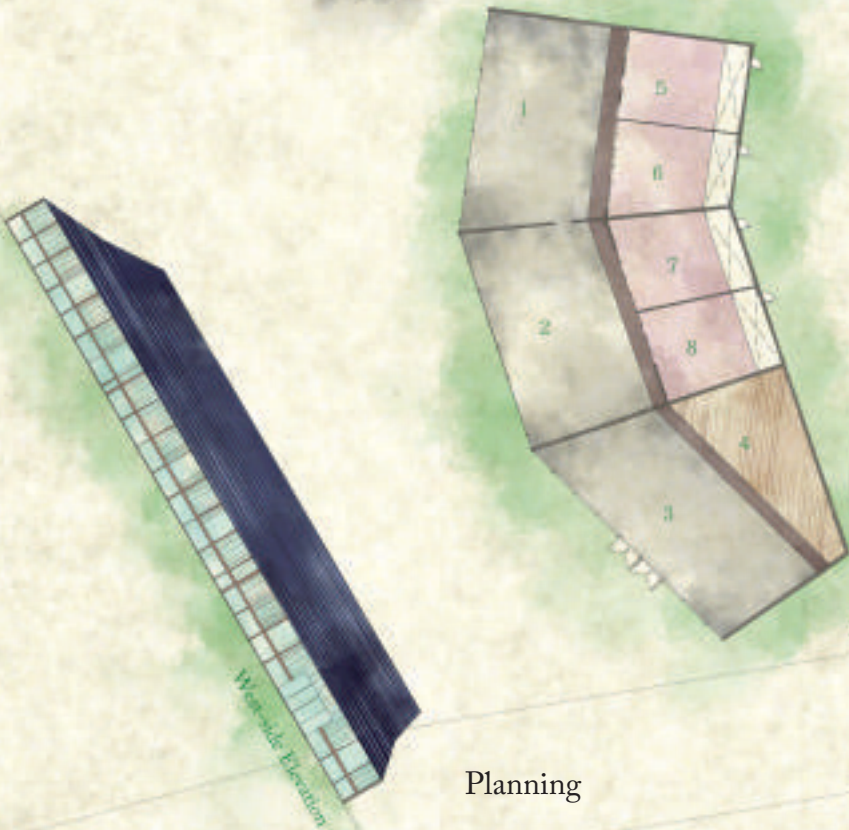


in the day time



after sunset

Lighting Concept



Plan

Planning

- 1.Studio1
- 2.Studio2
- 3.Workshop1
- 4.Workshop2
- 5.shared room1
- 6.shared room2
- 7.shared room3
- 8.shared room4



Scenes of Exhibition

